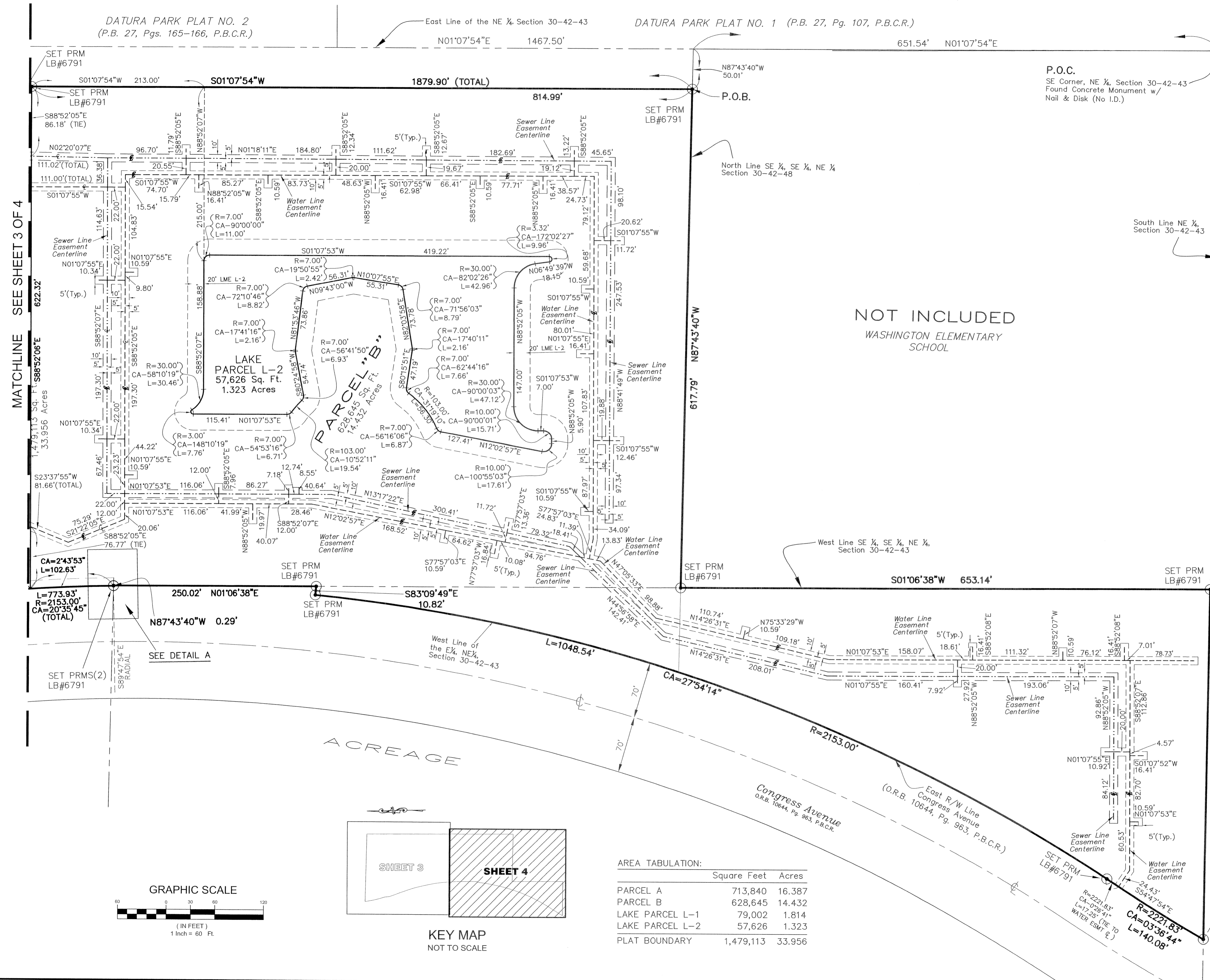
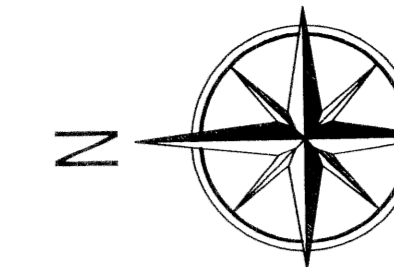


SIERRA-SONOMA BAY

A PORTION OF THE NORTHEAST ONE QUARTER (NE 1/4), OF SECTION 30, TOWNSHIP 42 SOUTH, RANGE 43 EAST IN THE CITY OF RIVIERA BEACH, PALM BEACH COUNTY, FLORIDA,

SHEET 4 OF 4

152



MATCHLINE SEE SHEET 3 OF 4



This Instrument Prepared By:
 Gregory J. Clements, P.S.M.
Calvin, Giordano & Associates, Inc.
Engineers Surveyors Planners
 1800 Eller Drive, Suite 600
 Ft. Lauderdale, Florida 33316
 Phone: 954.921.7781 Fax 954.921.8807
 Certificate of Authorization No. LB 6791
 January, 2004

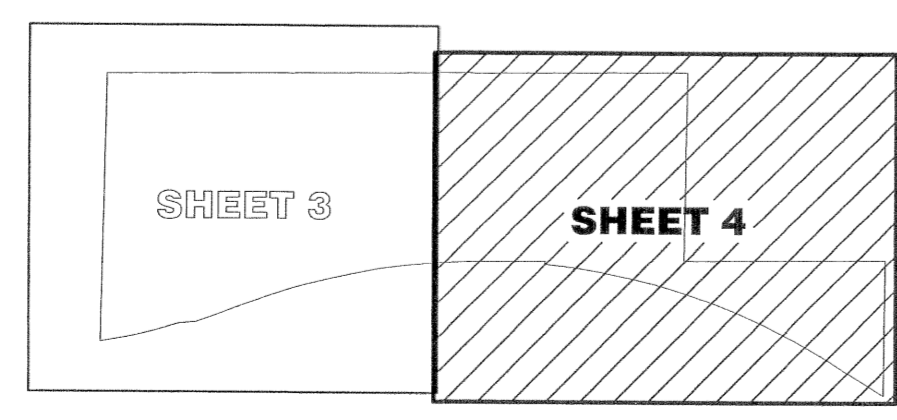
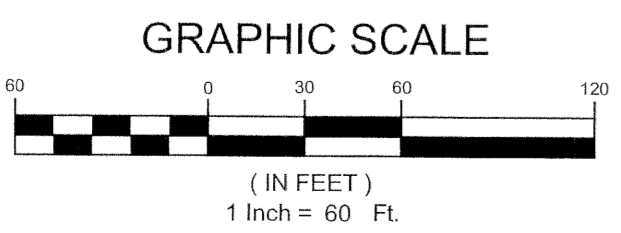
- LEGEND:**
- P.B.C.R. = PALM BEACH COUNTY RECORDS
 - CL = CENTERLINE
 - LB = LICENSED BUSINESS
 - LME = LAKE MAINTENANCE EASEMENT
 - O.R.B. = OFFICIAL RECORDS BOOK
 - P.B. = PLAT BOOK
 - PG. = PAGE
 - P.R.M. = PERMANENT REFERENCE MONUMENT
 - R/W = RIGHT-OF-WAY
 - SQ. FT. = SQUARE FEET
 - (Typ.) = TYPICAL
 - = WATER LINE EASEMENT CENTERLINE
 - - - = SEWER LINE EASEMENT CENTERLINE

SURVEYOR'S NOTES

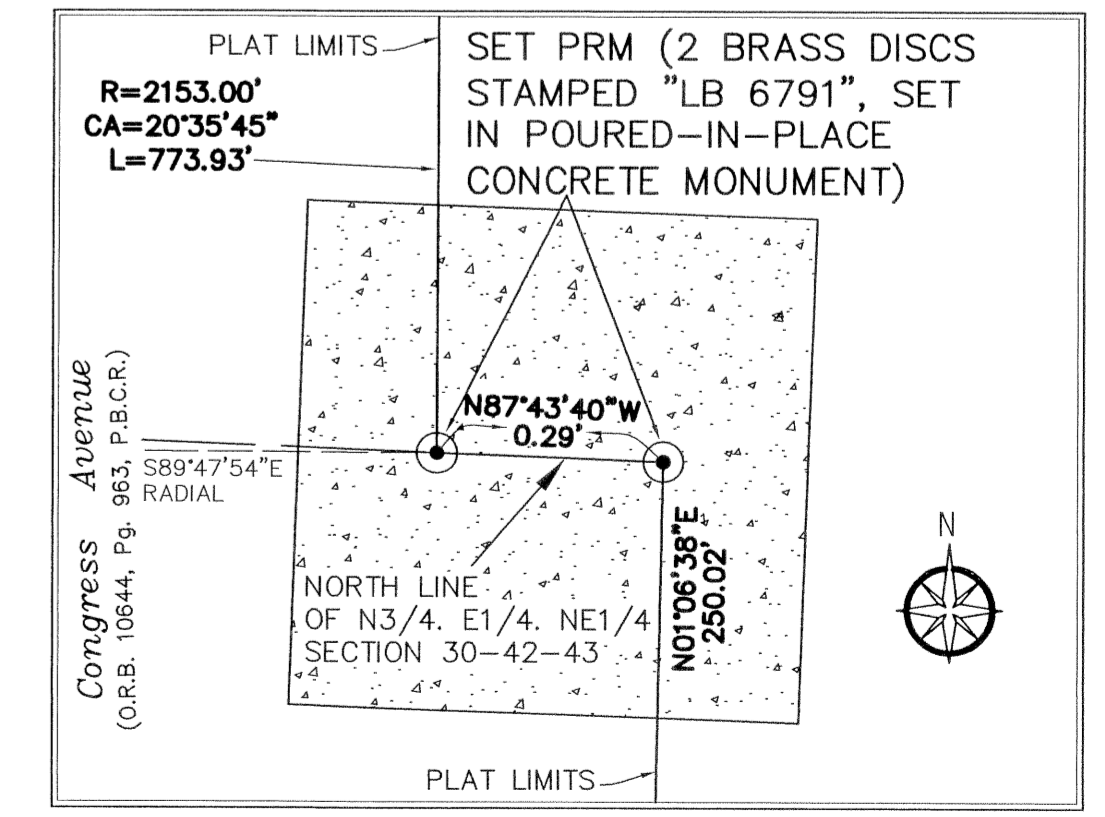
BEARINGS SHOWN HEREON ARE BASED ON THE EAST LINE OF THE NE1/4 OF SECTION 30, TOWNSHIP 42 SOUTH, RANGE 43 EAST, HAVING A BEARING OF N01'07'54\"/>

AREA TABULATION:

	Square Feet	Acres
PARCEL A	713,840	16.387
PARCEL B	628,645	14.432
LAKE PARCEL L-1	79,002	1.814
LAKE PARCEL L-2	57,626	1.323
PLAT BOUNDARY	1,479,113	33.956



KEY MAP NOT TO SCALE



DETAIL A 4"=1'